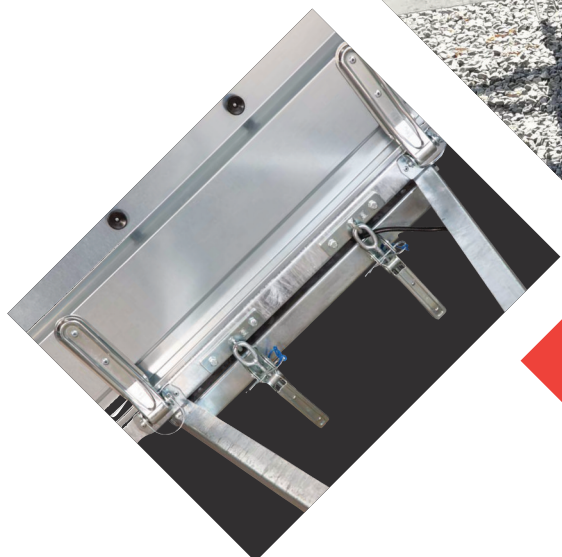


Carro



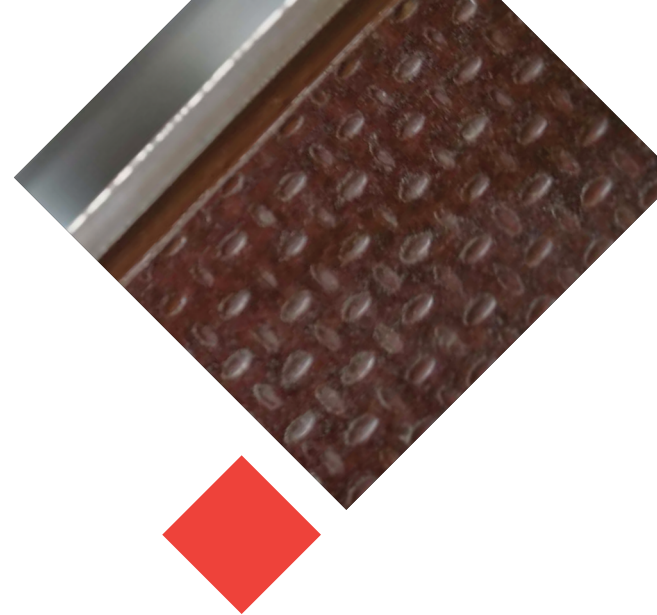
Konopnica 102 B
20-030 Motycz

info@carro.com.pl
Pon - pt: 9:00 - 18:00

Trailers Carro stands:

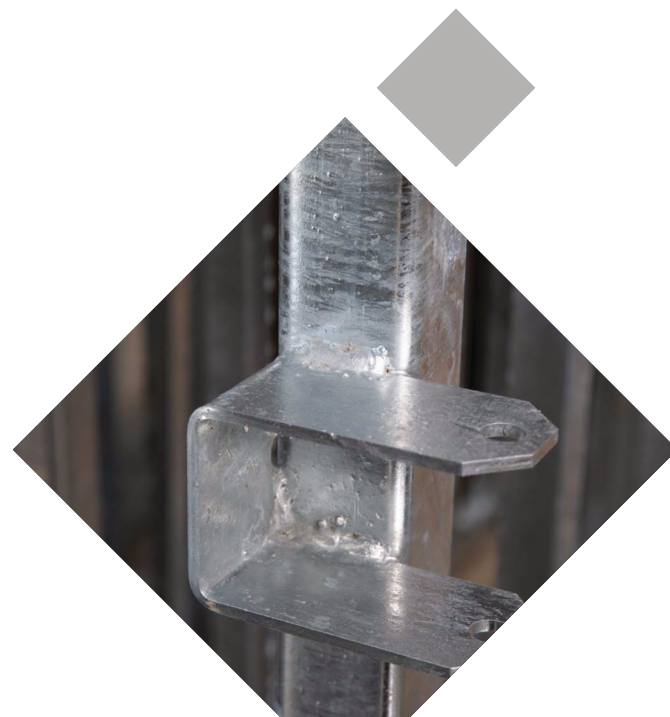
Frame and drawbar:

- basic material for production is S355 steel, more than half more durable from commonly used S235
- special additional stiffening of the frame
- welded frames are very durable and are designed for longer work
- all frame elements are hot-dip galvanized which guarantees their durability and high resistance to corrosion
- 3-year warranty on the frame



SAFETY

HIGH QUALITY OF MATERIALS
MANY OPTIONS IN EACH MODELS



Applus⁺
IDIADA

EU homologation



Car trailer 1 axle „Alfa”

Alfa is modern car trailer with 1 axle. All sides are easy removable. It can be easily used as a platform. Wheels are placed outside of the trailer. Side height 40 cm. It's made of the best available materials. The frame is welded as well hot-dip galvanized.

Additional standard											
Dimensions of load-carrying body	Model	GVW	Weight [kg]	Frame welded	Front and back openable	All Sides are easy removable as a platform.	Supporting wheel with a clamp	Cargo handles	Side rolls	Frame of the board registration	Mudflaps
205 x 125 x 40	A2012	750	194	+	+	+	+	+	+	+	+
235 x 125 x 40	A2312	750	202	+	+	+	+	+	+	+	+
265 x 125 x 40	A2612	750	206	+	+	+	+	+	+	+	+
265 x 150 x 40	A2615	75a0	212	+	+	+	+	+	+	+	+
300x 150 x 40	A3015	750	220	+	+	+	+	+	+	+	+
330x 150 x 40	A3315	750	228	+	+	+	+	+	+	+	+
350x 150 x 40	A3515	750	235	+	+	+	+	+	+	+	+

Additional equipment									
Dimensions of load-carrying body	Model	Braked axle/axels	Tarpaulin h=0	Tarpaulin h=80	Tarpaulin H=120	Tarpaulin H=140	Bracket of a spare wheel	Spare wheel	Side supports
205 x 125 x 40	A2012	+	+	+	+	-	+	+	+
235 x 125 x 40	A2312	+	+	+	+	-	+	+	+
265 x 125 x 40	A2612	+	+	+	+	+	+	+	+
265 x 150 x 40	A2615	+	+	+	+	+	+	+	+
300x 150 x 40	A3015	+	+	+	+	+	+	+	+
330x 150 x 40	A3315	+	+	+	+	+	+	+	+
350x 150 x 40	A3515	+	+	+	+	+	+	+	+



Alfa

Car trailer „Beta” 1 axle with tipping box

Beta has an axle of 750 kg loading capacity, tipping box-body. All frame elements are hot-dip galvanized which guarantees their durability and high resistance to corrosion. All sides are easy removable. It can be easily used as a platform. Wheels are placed outside of the trailer. Side height 40 cm.

Additional standard

Dimensions of load-carrying body	Model	GVW	Weight [kg]	Frame welded	Front and back openable	All Sides are easy removable as a platform.	Supporting wheel with a clamp	Cargo handles	Side rolls	Frame of the board registration	Mudflaps
205 x 125 x 40	B2012	750	196	+	+	+	+	+	+	+	+
235 x 125 x 40	B2312	750	204	+	+	+	+	+	+	+	+
265 x 125 x 40	B2612	750	208	+	+	+	+	+	+	+	+
265 x 150 x 40	B2615	750	214	+	+	+	+	+	+	+	+
300x 150 x 40	B3015	750	222	+	+	+	+	+	+	+	+
330x 150 x 40	B3315	750	232	+	+	+	+	+	+	+	+

Additional equipment

Dimensions of load-carrying body	Model	Braked axle/axels	Tarpaulin h=0	Tarpaulin h=80	Tarpaulin H=120	Tarpaulin H=140	Bracket of a spare wheel	Spare wheel	Side supports
205 x 125 x 40	B2012	+	+	+	+	-	+	+	+
235 x 125 x 40	B2312	+	+	+	+	-	+	+	+
265 x 125 x 40	B2612	+	+	+	+	+	+	+	+
265 x 150 x 40	B2615	+	+	+	+	+	+	+	+
300x 150 x 40	B3015	+	+	+	+	+	+	+	+
330x 150 x 40	B3315	+	+	+	+	+	+	+	+



Beta

Car trailer 2 axles „Gamma”

Gamma is modern car trailer with 2 axles. All sides are easy removable. It can be easily used as a platform. Wheels are placed outside of the trailer. Side height 40 cm. The drawbar and frame are welded from closed profiles. All frame elements are hot-dip galvanized which guarantees their durability and high resistance to corrosion.

Additional standard

Dimensions of load-carrying body	Model	GVW	Weight [kg]	Frame welded	Front and back openable	All Sides are easy removable as a platform.	Supporting wheel with a clamp	Cargo handles	Side rolls	Frame of the board registration	Mudflaps
235 x 125 x 40	G2312	750	250	+	+	+	+	+	+	+	+
265 x 125 x 40	G2612	750	257	+	+	+	+	+	+	+	+
265 x 150 x 40	G2615	750	264	+	+	+	+	+	+	+	+
300 x 150 x 40	G3015	750	272	+	+	+	+	+	+	+	+
330 x 150 x 40	G3315	750	284	+	+	+	+	+	+	+	+

Additional equipment

Dimensions of load-carrying body	Model	Braked axle/axels	Tarpaulin h=0	Tarpaulin h=80	Tarpaulin H=120	Tarpaulin H=140	Bracket of a spare wheel	Spare wheel	Side supports
235 x 125 x 40	G2312	+	+	+	+	-	+	+	+
265 x 125 x 40	G2612	+	+	+	+	+	+	+	+
265 x 150 x 40	G2615	+	+	+	+	+	+	+	+
300 x 150 x 40	G3015	+	+	+	+	+	+	+	+
330 x 150 x 40	G3315	+	+	+	+	+	+	+	+



Gamma

Car trailer 2 axles with wheels under plattform „Delta”

Products from this category are characterized by wheels under a loading plattform. The sides of the trailer can be easily removed and used as a platform. Trailer with 2 axles unbraked or braked 850 or 1350 kgs. KNOTT. The drawbar and frame are welded from closed profiles.

Additional standard

Dimensions of load-carrying body	Model	GVW	Weight [kg]	Frame welded	Front and back openable	All Sides are easy removable as a platform.	Supporting wheel with a clamp	Cargo handles	Side rolls	Frame of the board registration	Mudflaps
265 x 150 x 40	D2615	750	300	+	+	+	+	+	+	+	+
300x 150 x 40	D3015	750	317	+	+	+	+	+	+	+	+
330 x 150 x 40	D3315	750	337	+	+	+	+	+	+	+	+
350 x 150 x 40	D3515	750	352	+	+	+	+	+	+	+	+
350 x 200 x 40	D3520	750	362	+	+	+	+	+	+	+	+
400 x 200 x 40	D4020	750	337	+	+	+	+	+	+	+	+

Additional equipment

Dimensions of load-carrying body	Model	Braked axle/axels	Tarpaulin h=0	Tarpaulin h=80	Tarpaulin H=120	Tarpaulin H=140	Bracket of a spare wheel	Spare wheel	Side supports
265 x 125 x 40	D2615	+	+	+	+	+	+	+	+
300x 150 x 40	D3015	+	+	+	+	+	+	+	+
330 x 150 x 40	D3315	+	+	+	+	+	+	+	+
350 x 150 x 40	D3515	+	+	+	+	+	+	+	+
350 x 200 x 40	D3520	+	+	+	+	+	+	+	+
400 x 200 x 40	D4020	+	+	+	+	+	+	+	+



Car trailer 1axle and 2 axles „Wood”

Products from this category are characterized by all sides are made from waterproof plywood. The drawbar and frame are welded from closed profiles. All frame elements are hot-dip galvanized which guarantees their durability and high resistance to corrosion.

Additional standard

Dimensions of load-carrying body	Model	GVW	Weight [kg]	Frame welded	All Sides are easy removable as a platform.	Supporting wheel with a clamp	Cargo handles	Side rolls	Frame of the board registration	Mudflaps
235 x 125 x 40	W2312	750	204	+	+	+	+	+	+	+
265 x 125 x 40	W2612	750	208	+	+	+	+	+	+	+
265 x 150 x 40	W2615	750	214	+	+	+	+	+	+	+
300x 150 x 40	W3015	750	222	+	+	+	+	+	+	+
330x 150 x 40	W3315	750	232	+	+	+	+	+	+	+
350x 150 x 40	W3515	750	240	+	+	+	+	+	+	+

Additional equipment

Dimensions of load-carrying body	Model	Braked axle/axels	Front openable	Tarpaulin h=0	Tarpaulin h=80	Tarpaulin H=120	Tarpaulin H=140	Bracket of a spare wheel	Spare wheel	Side supports
235 x 125 x 40	W2312	+	+	+	+	+	-	+	+	+
265 x 125 x 40	W2612	+	+	+	+	+	+	+	+	+
265 x 150 x 40	W2615	+	+	+	+	+	+	+	+	+
300x 150 x 40	W3015	+	+	+	+	+	+	+	+	+
330x 150 x 40	W3315	+	+	+	+	+	+	+	+	+
350x 150 x 40	W3515	+	+	+	+	+	+	+	+	+



Car trailer „Eta” -1 axle

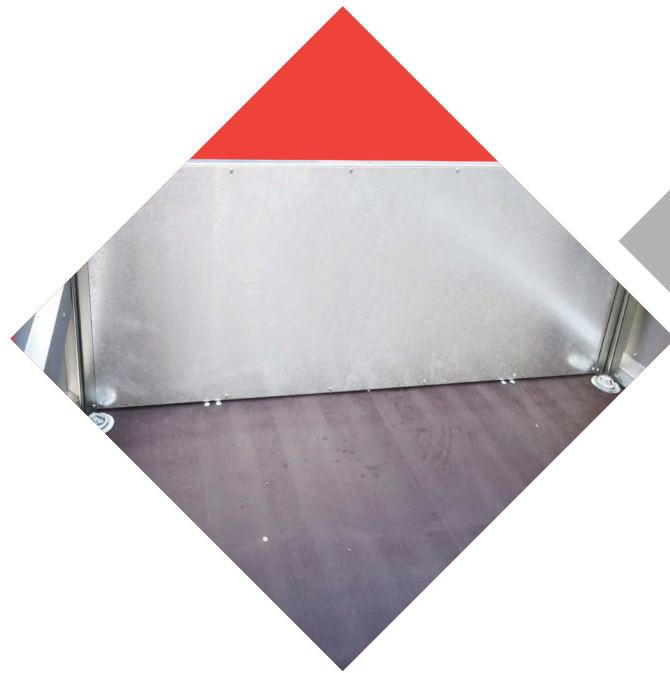
Products from this category are characterized by a very durable construction. The drawbar and frame are welded from closed profiles. All frame elements are hot-dip galvanized which guarantees their durability and high resistance to corrosion.

Additional standard

Dimensions of load-carrying body	Model	GVW	Weight [kg]	Frame welded	Supporting wheel with a clamp	Cargo handles	Side rolls	Frame of the board registration	Mudflaps
265 x 125 x 40	E 2612	750	280	+	+	+	+	+	+
265 x 150 x 40	E 2615	750	300	+	+	+	+	+	+
300x 150 x 40	E 3015	750	317	+	+	+	+	+	+
330x 150 x 40	E 3315	750	337	+	+	+	+	+	+
350x 150 x 40	E 3515	750	352	+	+	+	+	+	+

Additional equipment

Dimensions of load-carrying body	Model	Braked axle/axels	Front openable	Tarpaulin h=0	Tarpaulin h=80	Tarpaulin H=120	Tarpaulin H=140	Bracket of a spare wheel	Spare wheel	Side supports
265 x 125 x 40	E 2612	+	+	+	+	+	+	+	+	+
265 x 150 x 40	E 2615	+	+	+	+	+	+	+	+	+
300x 150 x 40	E 3015	+	+	+	+	+	+	+	+	+
330x 150 x 40	E 3315	+	+	+	+	+	+	+	+	+
350x 150 x 40	E 3515	+	+	+	+	+	+	+	+	+



Car trailer „Kappa”-2axles

Products from this category are characterized by a very durable construction. The drawbar and frame are welded from closed profiles. All frame elements are hot-dip galvanized which guarantees their durability and high resistance to corrosion.

Additional standard

Dimensions of load-carrying body	Model	GVW	Weight [kg]	Frame welded	Supporting wheel with a clamp	Cargo handles	Side rolls	Frame of the board registration	Mudflaps
265 x 125 x 40	K 2612	750	280	+	+	+	+	+	+
265 x 150 x 40	K 2615	750	300	+	+	+	+	+	+
300x 150 x 40	K 3015	750	317	+	+	+	+	+	+
330x 150 x 40	K 3315	750	337	+	+	+	+	+	+
350x 150 x 40	K 3515	750	352	+	+	+	+	+	+

Additional equipment

Dimensions of load-carrying body	Model	Braked axle/axels	Front openable	Tarpaulin h=0	Tarpaulin h=80	Tarpaulin H=120	Tarpaulin H=140	Bracket of a spare wheel	Spare wheel	Side supports
265 x 125 x 40	K 2612	+	+	+	+	+	+	+	+	+
265 x 150 x 40	K 2615	+	+	+	+	+	+	+	+	+
300x 150 x 40	K 3015	+	+	+	+	+	+	+	+	+
330x 150 x 40	K 3315	+	+	+	+	+	+	+	+	+
350x 150 x 40	K 3515	+	+	+	+	+	+	+	+	+



Kappa

Car trailer „Moto”

Moto-a new line designed for transporting all types of motorcycles and scooters.

Additional standard

Dimensions of load-carrying body	Model	GVW	Weight [kg]	Frame welded	Rail height	shaft detachable	Frame of the board registration	Mudflaps
2050 x 1250	M 2012	750	136	+	0	+	+	+
2350x1500	M 2315	750	166	+	200	-	+	+



Moto

Car trailer „Quad”

Quad - trailers dedicated mainly to transport such vehicles as; quads or garden tractors.

Additional standard

Dimensions of load-carrying body	Model	GVW	Weight [kg]	Frame welded	Rail height	shaft detachable	Frame of the board registration	Mudflaps
2350 x 1500	Q 2315	750	171	+	0	+	+	+

Additional equipment

Dimensions of load-carrying body	Model	Spare wheel	Side supports
2350 x 1500	Q 2315	+	+



Quad

Log type trailer

The trailers from this series are made to carry long loads.The frame are welded from closed profiles.
All frame elements are hot-dip galvanized which guarantees their durability and high resistance to corrosion.

Additional standard								
Dimensions of load-carrying body	Model	GVW	Weight [kg]	Frame welded	Front and back openable	Supporting wheel with a clamp	Frame of the board registration	Mudflaps
615 x 125 x 40 - 1 axle	DR6151	750	284	+	+	+	+	+
615 x 125 x 40 - 1 axle braked	DR6151	750	314	+	+	+	+	+
615 x 125 x 40 - 2 axels	DR6152/2	750	335	+	+	+	+	+
615 x 125 x 40 - 2 axels braked	DR6152/2	750	396	+	+	+	+	+

Additional equipment		
Dimensions of load-carrying body	Model	Non-slip plywood
615 x 125 x 40 - 1 axle	DR6151	+
615 x 125 x 40 - 1 axle braked	DR6151	+
615 x 125 x 40 - 2 axels	DR6152/2	+
615 x 125 x 40 - 2 axels braked	DR6152/2	+



Accessories

The Carro company offers; wheels, handles, hooks, supports, support wheels, lighting, lamps, reflectors, electrical connectors and many others.

We are able to do each tarpaulin depending on the client's needs.



The image features the Carro logo in a bold, italicized, black sans-serif font. To the right of the logo is a dark grey diamond shape containing contact information. A thick red curved line starts from the top right and curves downwards towards the diamond. The background is white with a grey wavy shape at the bottom and a grey diamond shape on the right.

Carro

Konopnica 102 B
20-030 Motycz

info@carro.com.pl
Pon - pt: 9:00 - 18:00